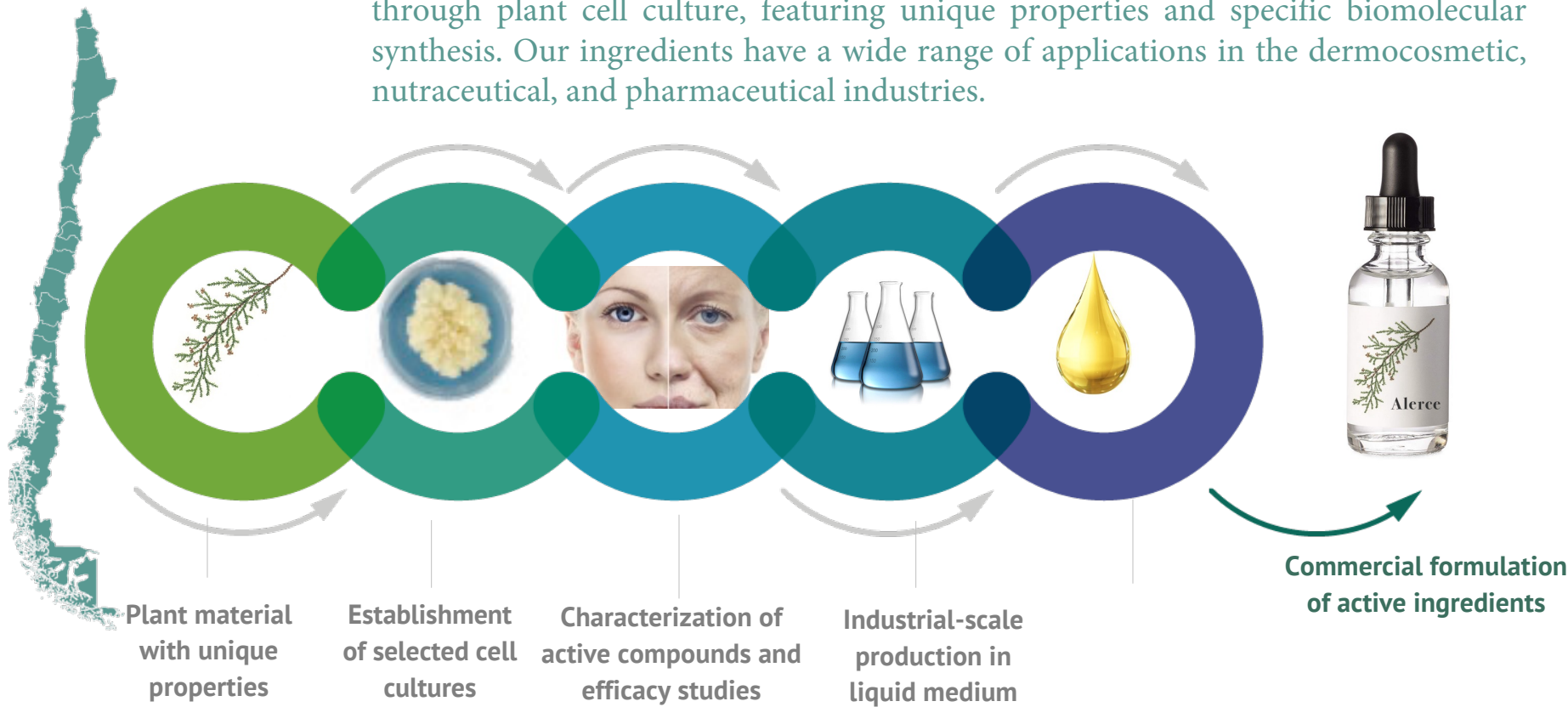




WE PROVIDE SOLUTIONS FOR THE PRODUCTION OF PLANT-BASED ACTIVE INGREDIENTS

BIOTECHNOLOGY PLATFORM

We have developed a platform for the production of natural active ingredients through plant cell culture, featuring unique properties and specific biomolecular synthesis. Our ingredients have a wide range of applications in the dermocosmetic, nutraceutical, and pharmaceutical industries.



First product: Australcell™ alerce

Anti-wrinkle active ingredient based on alerce cell culture (Fitzroya cupressoides)

(WO2020075074)



Cosmetic uses
Prevention of wrinkles and expression lines with HIGH EFFICIENCY vs OTHERS



Market launch
Q2-2022



Australcell™alerce is a dermatologically tested and clinically proven as a cosmetic active ingredient



ORIGINAL CONTRIBUTION
Effect of alerce (Fitzroya cupressoides) cell culture extract on wound healing repair in a human keratinocyte cell line
Felipe Carrasquillo PhD¹ | Catherine Duran PhD² | Felipe Aguero PhD^{2,3,4}

Customer validation

Europe

Ré-skincare,
donde la belleza encuentra
su resiliencia



Ré-skincare



KUMIKO™ LATAM



South Korea

PUHIN과 Alerce 나무의 생명력으로
피부 속까지 케어하는 멀티 솔루션



Intellectual Property:
6 patents filed (5 for use, 1 for process); 2 granted; portfolio of 25 species.

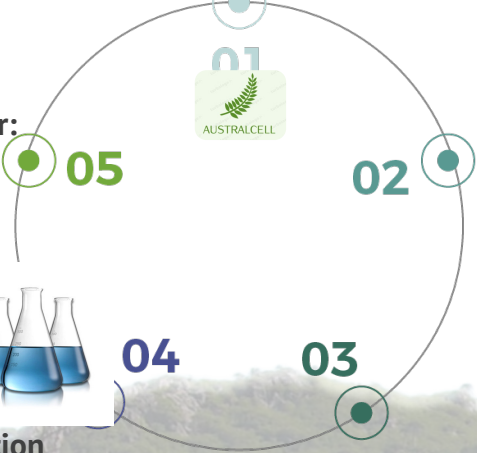


- Production and sales across 3 continents
- Commercialization through strategic partners

Strategic Direction

Active Ingredient Creation

- We target global markets with a commercial partner: USA, Europe, and Asia



- We scale production in our proprietary cell farms

Clinical studies and IP applied to new ingredients

- Market launch in 2024: Paris Q2 (Maqui), Barcelona Q4 (Quillay), Bangkok Q4 (Flor d'Atacama)

- 2025: 3 new ingredients

ADVANTAGES



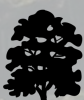
- Fully sustainable production



- Patents filed for use and processes



- Multifunctional and highly effective ingredients



- Proprietary cell farms
- Science-based narratives and species with exceptional attributes

- Platform replicable for any plant species

CALL TO ACTION:

US\$ 2,6 MM FOR:

- 35% EXPAND PRODUCTION CAPABILITIES
- 30% I&D + PI
- 35% COMMERCIAL PUSH

